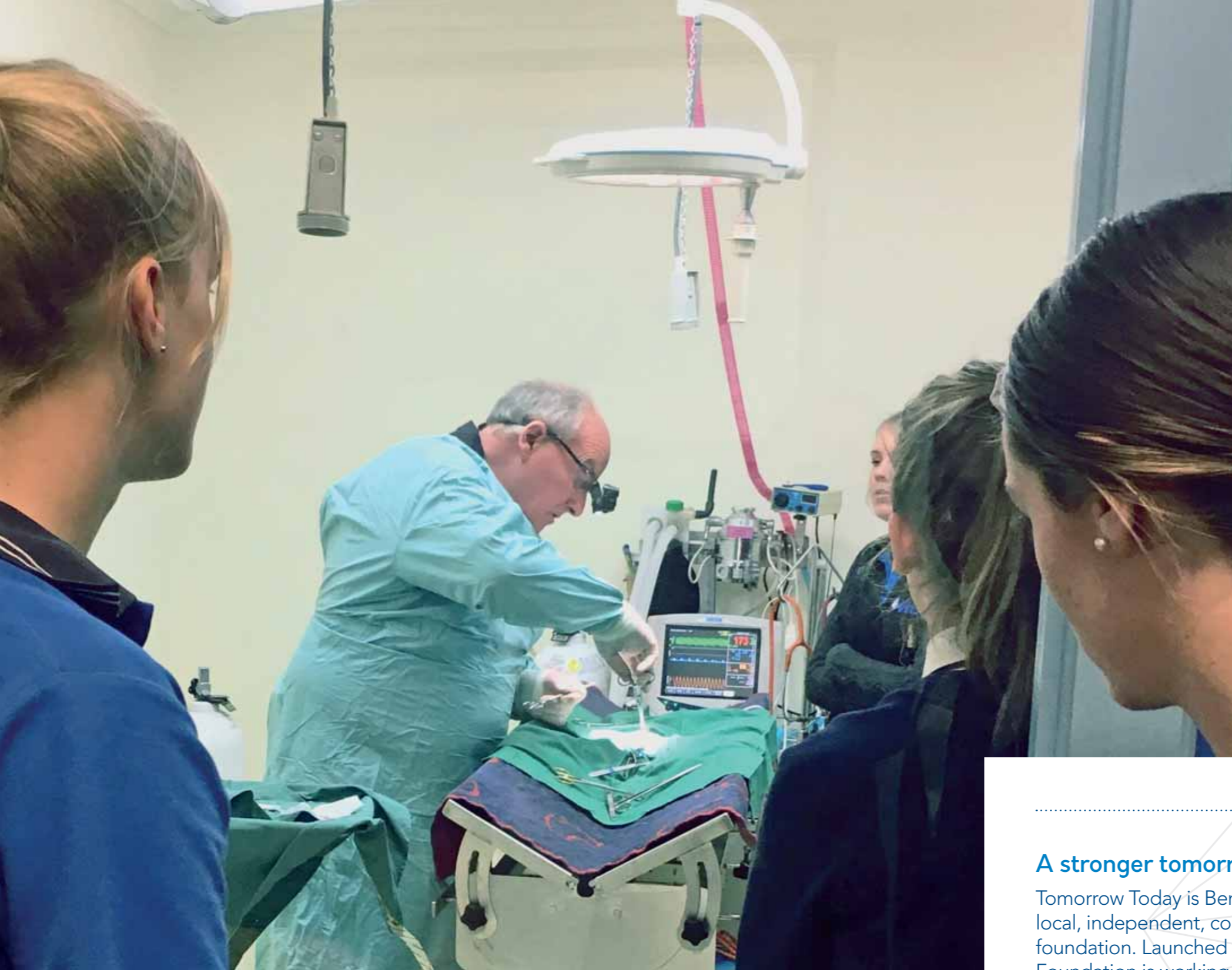




annual report  
2018/2019

*Benalla district our community*

TOMORROW  TODAY



# Contents

- Chair’s Report ..... 2
- Executive Officer’s Report ..... 4
- Benalla’s Community Fund ..... 6
- Grants Distributed ..... 7
- Education Benalla Program
  - Overview Graphic ..... 12
  - Convenor’s Report ..... 14
  - Projects and Activities ..... 15
- Directors ..... 32
- Organisational Sustainability ..... 34
- Financial Reports ..... 35
- Our Supporters ..... 40



## A stronger tomorrow

Tomorrow Today is Benalla and District’s local, independent, community foundation. Launched in 2002, the Foundation is working to help create a stronger, more resilient and prosperous community.

Our Community Fund is an enduring resource that provides local grants to meet changing community needs. And our trailblazing Education Benalla Program is on track to ensure that local children have the opportunity to achieve their individual potential.

## By acting today

Tomorrow Today is involved in community philanthropy – making it easy for people to give their time, money and skills in a way that will have a lasting impact on the community they care about.

We develop strong partnerships with local businesses, organisations, clubs and service groups, to work together in a ‘whole-of-community’ approach to address deep community challenges. With the active support of funders from beyond Benalla and the preparedness of local organisations and groups to marshal their resources, a vast number of activities and actions are undertaken that span family, community and school life.

Together, we are making a difference.

**ABOVE:** Visiting a veterinary surgery and observing an operation in action was one of the many highlights of 2018 Year 10 Careers Day. Tomorrow Today coordinates the annual event which was attended by 141 students.

**FRONT COVER:** Secure parent-child attachment is the foundation for a child’s ability to connect with others in a healthy way. Qualities such as love, empathy and understanding are first learned in infancy. At PEEP, parent-child bonding is encouraged and supported through engagement in songs, stories and shared activities, including outdoor play at Cecily Court (pictured).

Tomorrow Today A Foundation for Rural Community Development  
ABN 19 096 214 907

Tomorrow Today A Foundation for Rural Community Development Public Fund  
ABN 98 553 570 389

Tomorrow Today Education Foundation  
ABN 90 610 420 123

We’d like to acknowledge that a number of the photos in this publication have been provided thanks to our program partners and we thank John Spencer and Karl Phillipson for their contributions.



## Chair's Report

Twenty years ago, a Regional Australia Summit in Canberra identified a growing economic divide between city and country. It highlighted that rural and regional communities had to identify their own solutions and work together to make change happen. This was the impetus for establishing Tomorrow Today Foundation, now an integral part of the Benalla and district community.



The Education Benalla Program is our major undertaking. Working with families, schools and the broader community, the many activities that make up the program are designed to improve the educational outcomes of our young people. It is a long term endeavor, a 'solution' to Benalla's persistently high level of social disadvantage which affects lifelong trajectories in health, wellbeing, educational outcomes and employment choices.

Setting out to level the playing field so that a generation of young people has the opportunity to achieve their individual potential is an ambitious task. It requires a whole of community approach plus additional resources based on individual need, child by child. We are seeing unprecedented cooperation and collaboration in Benalla to support our kids. Thank you to all the people involved in so many different groups and organisations, across the public, private and community spheres who are working together to create positive change.

And change is happening. Among the improved indicators this year, it was heartening to see a significant increase in the number of Benalla's children arriving at school ready to learn. Details are provided

in the report by Liz Chapman OAM, Convenor of the Education Benalla Program. We are indebted to Liz for bringing the message back from that 1999 Canberra Summit and providing the vision and leadership to turn it into reality in our community.

We do considerable on-the-ground work in the areas of parenting and child development, literacy and numeracy, student wellbeing, the transition beyond school, and increasingly in helping young people to be skilled for future work. My thanks to our incredible staff team and in particular Executive Officer, Pat Claridge, who will be retiring in the coming year. Pat's dedication to making a real difference in children's lives shines bright, as she so effectively leads and nurtures change. Thank you Pat, for your support and immense good will.

Our work would not be possible without the exceptional partnerships we have with our philanthropic funders. In addition to maintaining philanthropic support, securing ongoing government funding is a priority. Our first Commonwealth Government grant was very welcome.

Community generosity has taken many forms this year. I would like to acknowledge and thank our many

donors and business sponsors for their generosity and commitment to making a difference locally. It is with deep appreciation that we acknowledge the Foundation's first bequest. Providing a gift to Tomorrow Today in your will is a powerful way to support Benalla and district's future. Many people also gave the gift of their time. Thank you to the volunteers who assist in all aspects of the Foundation's work, including the new Friends of Tomorrow Today who are coordinating a major fundraiser for the Foundation.

Purchasing Cecily Court was a game changer for Tomorrow Today. It provides a secure home for the Foundation and its activities, plus an ongoing income stream through leasing offices. The property is a major part of our current strategic focus on organisational sustainability for ongoing community benefit. We were pleased to increase our equity this year with a significant loan repayment, thanks to wonderful community and philanthropic support.

Another goal in relation to organisational sustainability is to have a strong and diverse board. We were delighted to recruit three high caliber new directors, Georgina Burston, Melinda Lawley and Florent Thivillier, who bring a breadth of valuable skills and

experience. Special thanks to Adrian Aldous who we farewelled from the Board in June. Over the last fourteen years Adrian has played a pivotal role in the Foundation's development, as a dedicated Board member, Treasurer, fundraiser extraordinaire and much more. I am delighted that he will continue as a community member of our Audit and Finance & Investment Committees. Thank you to all for continuing to provide such strong governance throughout a busy and successful year.

Looking forward, I see a stronger tomorrow for Benalla as so many people come together to address the challenges of today.

**Sally Gamble**  
Chair

**ABOVE:** Our Annual Celebration in October is an opportunity to report to the community on progress for the year. Left to right: Tomorrow Today Executive Officer, Pat Claridge and Directors; Louise Pearce, Florent Thivillier, Nick Taylor, Liz Chapman OAM, Sally Gamble, Bill Dobson (retired), Melinda Lawley and Adrian Aldous (retired) are joined by Alberto Furlan (Senior Program Manager, The Ian Potter Foundation) and Winsome McCaughey (Trustee, Helen Macpherson Smith Trust).



# Executive Officer's Report

As I reflect on my time at Tomorrow Today, a particular quote stands out: "Community building requires a commitment to seeking justice over charity". This core principle is at the heart of Tomorrow Today's work, particularly the establishment of the Education Benalla Program. Many of our local families face huge challenges through no fault or making of their own. They show amazing courage and resilience in the face of factors such as poor education, difficult financial circumstances, dysfunctional family settings and crippling health issues. They do not need handouts - they need help to build on their inherent skills and strengths. They need to live in a community where they have equal access to the many opportunities available. And they need a community environment that aspires for them to succeed.



Tomorrow Today has had another successful year of helping individuals, families, and organisations build on their strengths. It is now showing in Benalla's 2018 AEDC (Australian Early Development Census) results, released earlier this year. Tomorrow Today's Education Benalla Program values and encourages the vital role parents and carers play in helping their young children learn, and supports them to develop their parenting skills and knowledge. This has led to a significant increase in the number of Benalla children recorded as being developmentally ready to learn on school commencement. Many more of our children are now more likely to succeed at school, greatly improving their life chances and choices.

Tomorrow Today works with many partners to provide multiple interventions from birth to school completion to ensure Benalla's children and young people are supported to succeed. We are aided by more than 100 amazing volunteers who give selflessly of their time, skills and knowledge to help build the strength and resilience of our community. As testament to this 'whole of community' approach, there are many signs

of positive change across Benalla. In addition to the AEDC results, there is improved school attendance, greater numbers of students expressing satisfaction with their schooling, more young people completing school, greater involvement of our young people in the community, and reduced youth unemployment.

This year marks a major milestone for me as I begin my transition to retirement in April 2020. It is a journey tinged with enormous pride in what Tomorrow Today has achieved in recent years. We are increasingly recognised as a national leader in the field of place-based approaches; i.e. developing local solutions to address complex local issues. This is evidenced by the number of organisations and communities contacting us and visiting to find out more about our work.

However, leaving Tomorrow Today also brings sadness. Since joining the Foundation in June 2011, it has been my honour and privilege to meet and work with people from many different backgrounds, experiences and viewpoints. My profound gratitude is extended to all those who assist in providing life

changing opportunities: our funders, donors, partners and volunteers, including the newly formed Friends of Tomorrow Today who are committed to supporting the foundation. Tomorrow Today's grants program provides another means of harnessing strengths already present in our community. My congratulations and thanks go to all those who have received funding for great ideas that help build equity, wellbeing and prosperity for our Benalla and district residents.

It has also been an honour and privilege to work with our truly incredible Chair, Sally Gamble, who works selflessly and tirelessly on behalf of the organisation and provides strong leadership to the Tomorrow Today Board - whose dedication, wise governance and forward thinking are creating a brighter future for Benalla. I also pay tribute to Liz Chapman OAM, Convenor of the Education Benalla Program, whose extraordinary vision for a more equitable Benalla informs and sustains all that we do.

Finally I extend my heartfelt gratitude and admiration to my outstanding staff, who constantly strive to

do more and better for our families, children and young people, all while being warm, cheerful, caring, compassionate, hardworking, funny, thoughtful, inventive, and best of all able to sing together harmoniously and in tune.

**Pat Claridge**  
**Executive Officer**

**ABOVE:** Tomorrow Today's staff play a pivotal role in the delivery of a suite of programs and activities designed to create better outcomes for Benalla's children and young people.



## Benalla's Community Fund

Local giving for local benefit

Tomorrow Today makes it easy for donors to give locally to support the Benalla and district community.

Donations to the Community Fund are pooled and invested for local benefit. Income from the Fund is used to provide community grants that help create a stronger and more resilient community. Because the initial donation is kept in the fund, each gift keeps giving year after year.

**Over \$1.2 million is held in this perpetual fund for Benalla and District.**

### Named Funds

Donors can choose to establish a Named Fund to give ongoing support to a particular charitable cause that's important to them. These special accounts within the Community Fund are managed by Tomorrow Today to track donations and grants for a particular donor or cause.

Support was received this year for the following Named Funds:

- **Education Fund** – which supports young people whose educational opportunities are limited by disadvantage.
- **Kingston Smith Memorial Fund** – in memory of local toddler Kingston Smith. The Fund supports early intervention programs that enhance the education, health and welfare of young children in need.
- **Lonsdale Fund** – which supports young people whose opportunities are limited by alcohol and/or drug dependency within the family unit.

Further support for these Named Funds is welcome at any time.

**ABOVE:** A grant from the Community Fund supported volunteers to establish the Warrenbayne Playgroup.

**OPPOSITE:** Tomorrow Today is able to provide vital support to Benalla children and young people thanks to the Lonsdale Fund. Adrian and Marg Aldous who established the Fund are pictured with Tomorrow Today Chair, Sally Gamble (left) as they give their annual donation.

## Lonsdale Fund

The Lonsdale Fund is a great example of a local family working with Tomorrow Today to provide important opportunities for Benalla's young people.

In 2010, Adrian and Marg Aldous approached Tomorrow Today to establish a Named Fund where the donations would be used to help children in need. Their family wanted in a small way, to attempt to assist young people whose lives and opportunities for personal development were adversely affected by alcohol and drug abuse within their family unit. Tomorrow Today had begun to work closely with local schools and agencies through the Education Benalla Program and was in an ideal position to ensure funding reached those in need of assistance.

Thanks to the generosity of the Aldous family many Benalla children and young people have had the chance to be the same as 'normal' kids.

**Over the last ten years, \$38,000 has been distributed to help 72 young people aged 2 to 19, many on more than one occasion.**

Funding has helped with school camps; after-school care and vacation-care where the home environment is violent or unsettled; attendance at alternative education facilities; VET and TAFE courses; school needs; and costs to participate in sporting and recreational clubs.

## Grants Distributed

**Tomorrow Today distributed over \$54,000 in grants in Benalla and district this year.**

### Support for groups and organisations:

- **Community Grants program** – supports a range of local projects each year (detailed in the following pages) largely funded by income from the Community Fund. **(\$9,900)**

### Support for children and young people in families experiencing financial hardship:

- **Participation: Education** – support to have educational resources (see page 25 & 31), including Year 12 Scholarships, funded by local donations and Named Fund distributions. **(\$12,540)**
- **Participation: Sports/Hobbies** – support to participate in community activities (see page 26) mainly funded by philanthropic grants. **(\$14,825)**
- **FRRR Back to School vouchers** – (see page 25) thanks to support from FRRR and local donations. **(\$17,100)**



## Supporting local projects

Tomorrow Today's Annual Grants program provides an accessible source of funding for groups and organisations who are working to strengthen the Benalla and district community. Grants of up to \$5,000 are awarded at a ceremony in May each year.

Our Stepping Stones grants offer additional flexibility to community groups giving them the opportunity to obtain funding of up to \$1,000 for projects throughout the year.

**The focus areas for all Tomorrow Today grants align with two major themes:**

**Building a stronger, more connected community** through projects that fit one or more of the objectives:

- Addressing social disadvantage
- Promoting inclusion and increasing involvement in community
- Embracing community diversity

**Improving social and educational outcomes for Benalla's children and young people** through projects that fit one or more of the objectives:

- All Benalla children start school ready to learn
- Improving literacy and numeracy
- Increasing student wellbeing
- Improving student knowledge of careers and career pathways
- Building student aspiration

During 2018–19, five projects were funded through the Annual Grants program, three being jointly funded with Benalla Rural City, and one Stepping Stones grant was awarded.

### Warrenbayne Community WARRENBAYNE PLAYGROUP

**\$1,500 — Priority areas: All Benalla children start school ready to learn; Promoting inclusion and increasing involvement in community**

Based at the much-loved Warrenbayne Recreation Reserve, this developmental playgroup aims to facilitate social connection and learning for young children and their families in the Warrenbayne district.

Through music, art, movement, and story-telling, children are supported to increase their language, literacy and motor skills. They practice teamwork, sharing, talking and listening, leading to an increased sense of belonging and self-confidence.

Parents, grandparents, community members and visiting specialists are made welcome, promoting social inclusion for young and old. The playgroup celebrates the involvement of young families as current stakeholders and future leaders of the Warrenbayne community.

### Waminda Community House CAFÉ CLUB

**\$1,000 – Priority area: Promoting inclusion and increasing involvement in community**

This grant ensures the continuation of a successful project funded by Tomorrow Today in 2018. Café Club takes place each Wednesday morning at the CWA Hall providing a safe, welcoming space where residents and newcomers to Benalla can interact socially. People from all walks of life meet for conversation and company whilst enjoying a delicious morning tea. Students from Benalla Flexible Learning Centre practice their barista skills, providing coffee, tea and hot chocolate for a gold coin donation. Students from Ed Space frequently call in with their 'therapy dogs' who draw a lot of affection and attention from the Café Club patrons. The grant funds the cost of the venue and catering.

**ABOVE:** Announcement of 2019 Grants. Left to right: Pat Claridge, Tomorrow Today; Coral and Alistair Challender, Munro Ave Preschool; Lyn Sidhu & Michele Ramage, Benalla Flexible Learning Centre; Mary Bridgland, Warrenbayne Playgroup; Elise Wood, Benalla Aquatic Centre; Sally Gamble, Georgina Burston & Nick Taylor, Tomorrow Today.

**Benalla and District Pre-School Partnership  
KITCHEN/GARDEN MAKEOVER**

**\$2,500 – Priority area: All Benalla children start school ready to learn**

The kitchen at the Munro Avenue kindergarten site was badly in need of a makeover. This grant will fund a new oven, benchtops and sink so that children can prepare and cook their own food. Joint funding from Benalla Rural City will allow the creation of a kitchen garden so that the children can grow their own fruit and vegetables and use them in meal preparation.

**Benalla Flexible Learning Centre  
YOUNG PARENTS CAN ACHIEVE**

**\$2,200 – Priority areas: Increasing student wellbeing; Building student aspiration**

Benalla Flexible Learning Centre aims to re-engage young people in education so that they can transition back to mainstream schooling or move on to further education or employment. Young people, still of school-age, who are parents or parents to be, often disengage from school due to the difficulty of juggling childcare responsibilities with school and study requirements. In 2019 Tomorrow Today is partnering the Flexible Learning Centre in providing a PEEP program for young parents. The grant will support the safety and wellbeing of infants attending school with their parents by funding the purchase of car seats and capsules to assist with transport, and setting up a safe play area in the classroom equipped with change table, highchair and porta cot.

**Benalla YMCA  
2019 SCHOOLS WATER SAFETY PROGRAM**

**\$2,200 – Priority areas: Increasing student wellbeing; Promoting inclusion and increasing involvement in community**

This intensive water safety program runs in addition to the swimming programs offered by most schools, and gives Year 5 and 6 students an additional level of knowledge about survival techniques in case of a water accident or emergency. Students wear clothing, utilise boats and life jackets and wade through water with unknown items beneath the surface. Funding will finance the purchase of life-jackets and a raft and covers pool entry costs to enable participation of all students regardless of an ability to pay.

**Benalla P-12 College  
Interview to Impress – STEPPING STONES GRANT**

**\$500 – Priority areas - Building student aspiration; Improving student knowledge of careers and career pathways**

Australian Business and Community Network (ABCN) links business with education by organising structured activities where corporate volunteers mentor students in the workplace. In 2018, Tomorrow Today Board helped broker a meeting between ABCN and Benalla P-12 College. This led to 20 Benalla P-12 Year 10 students participating in ABCN's Interview2Impress program.

Students travelled to Melbourne where they gained an understanding of job interview techniques and processes and experienced realistic interview scenarios with corporate mentors. Benalla P-12's Careers Advisor, Kellie Cairncross rated the program as outstanding - relevant, engaging, fast paced and practical. A Stepping Stones grant helped fund the cost of the bus.

**Benalla Flexible Learning Centre  
TINY HOUSE PROJECT**

**Priority area: Improving student knowledge of careers and career pathways**

Some larger projects take more than the standard grant period of twelve months for completion. This is one such project. In May 2018, Tomorrow Today awarded a \$5,000 grant to Benalla Flexible Learning Centre so that students could convert a shipping container into a 'tiny house'. In a remarkable gesture of generosity, a Tomorrow Today donor present at the awards ceremony offered to fund the purchase of the container so that all of the grant money could be spent on fittings and furnishings.

Under the guidance of their trade teacher, students at the Learning Centre have undertaken the conversion, gaining many competencies that will aid them in future employment. They have been involved at all stages – developing their talents in planning, design and construction, as well as improving their teamwork and organisational skills. The tiny house is nearing completion and has contributed to the employability of a number of previously disengaged young people.

**OPPOSITE TOP LEFT:** Caring for plants, growing their own food and working as a team are all skills developed through preschool kitchen garden projects. Ride Avenue Preschool (pictured) received a grant in 2018.

**TOP RIGHT:** The Ed Space therapy dogs are popular visitors to Café Club.

**MIDDLE LEFT:** Students at Benalla Flexible Learning gain valuable skills while converting a container into a 'tiny house'.

**MIDDLE RIGHT:** A range of engaging activities are offered at Warrenbayne Playgroup.

**BOTTOM:** Interview to Impress – Benalla P-12 students benefit from engaging with corporate mentors in Melbourne.

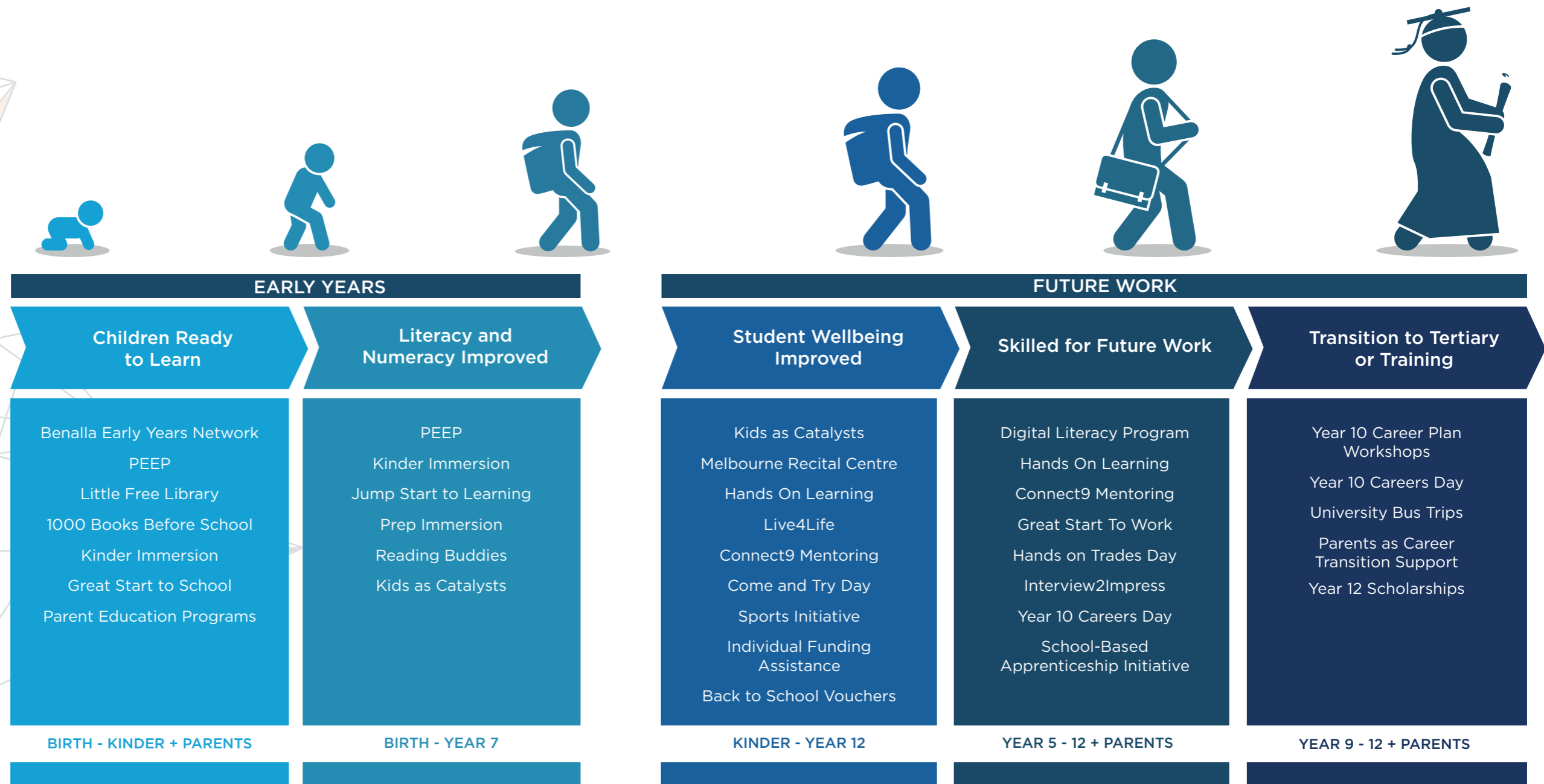


# The Education Benalla Program

An ambitious community-led approach to addressing disadvantage in Benalla and district by improving educational outcomes for Benalla's young people.

Working with families, schools and the community it gives Benalla's children every chance to prosper in life.

Tomorrow Today also provides funding and staff support to many other projects run by partnering schools, clubs and agencies.



– RAISING COMMUNITY ASPIRATION FOR BENALLA'S YOUNG PEOPLE –





## Education Benalla Program

Tomorrow Today's purpose and structure provides the mechanism for the Benalla community to act to mitigate the impact of disadvantage on children's educational outcomes and future work choices. With time, I believe that the measured population improvements now in evidence will work to move Benalla out of its persistent communal level of disadvantage.



There are very strong reasons to maintain our energy and focus. Children aged 5 - 6 years living in the most socio-economically disadvantaged locations in Australia, such as Benalla, are between 2.0 and 4.6 times as likely to be developmentally vulnerable on measures of physical health and wellbeing, communication skills, language and cognitive development, emotional maturity, and social competence than those from the least disadvantaged areas. All these measures have singular as well as a combined effect on a child's ability to learn and achieve.

When a child has healthy development, he or she commences school ready to learn. The child who commences school ready to learn is far more likely to become literate and numerate at a rate in keeping with the school curriculum's momentum. A child's level of early development predicts their literacy and numeracy outcomes throughout their primary school years. Poor levels of literacy and numeracy have a compounding effect which impacts aspiration and school retention. Completion of education is less likely to occur in socio-economically disadvantaged communities such as Benalla. It is a terrible reinforcing cycle — poor educational outcomes are central to the perpetuation of communal levels of disadvantage and the communal level of disadvantage negatively impacts educational outcomes.

Benalla is now running counter to this. The percentage of children developmentally vulnerable has decreased significantly from 32.9% in 2015 to 23.5% (Victoria 19.9%; Australia 21.7%). The proportion of Benalla's children considered to be developmentally "on-track" significantly improved in the 2018 Australian Early Development Census, despite the community level of socio-economic disadvantage.

Socio-economic status need not dictate lifelong trajectories in health, wellbeing, educational outcomes and employment choices.

Back in 2007 Tomorrow Today learned from research commissioned by the Jesuit Social Services that Benalla was highly disadvantaged and that improving children's educational outcomes was the key to changing life trajectories. Since that time we have made it our primary role to work closely with the public, private, community, and philanthropic sectors to mitigate the impact of disadvantage on child development, literacy and numeracy, child and youth wellbeing, school retention, and future work choices. The partnerships we enjoy with schools, agencies, funding partners, community groups and businesses make sustained, long term change in Benalla entirely probable. I see firsthand the sacrifices made by organisational leaders, managers, volunteers, parents

and hands-on staff to achieve the changes we are driven to affect. Thank you to you all.

**Liz Chapman OAM**  
**Convenor – Education Benalla Program**  
**Board Member**

### Overview

Tomorrow Today conducts and partners in many activities to ensure that all Benalla students are 'ready to learn' when they start school, and that any children who have 'fallen through the cracks' are given extra assistance to catch up to their peers after school commencement. Through our programs we foster strong relationships with parents, preschools, schools and community partners to enhance the learning and development of Benalla's children.

As children move through the education system, Tomorrow Today offers ongoing assistance, providing funding for school and social needs to ensure that all have equal access to educational and community activities.

Approaching and navigating the middle school years, students are supported by our 'Future Work' initiative, a whole of community approach to improving employment outcomes for Benalla's young people. Tomorrow Today leads and partners

in a range of activities to help our young people to develop 'employability' skills and to build their career knowledge and confidence so that they can embrace future work opportunities that set them up to enjoy happy, healthy and successful lives.

### Benalla Early Years Network

Tomorrow Today plays a lead role in this collaboration of local organisations working together to improve child development and learning. Cross-organisational collaboration is critical to mitigating the effects of disadvantage.

Tomorrow Today participates on the Executive and on three action groups, which also have strong representation from Benalla Rural City Council, Department of Education and Training, and local preschools and schools, to address the following priorities:

- Improving the learning and communication skills of young children
- Improving the social-emotional development of young children
- Providing parents with quality parent education

**ABOVE:** Senator Jane Hume attending PEEP to present our first-ever Federal Government grant.

# PEEP

(Parents Early Education Partnership)

PEEP is a facilitated group program run by Tomorrow Today that recognises and values the vital role parents play as their child's first and most important educator. Parents and children learn together. Sessions include songs, books and rhymes, stimulating pre-literacy and pre-numeracy activities for children, and parent discussions about child health and development. Parenting information shared in 'talk time' is tailored around child/parent needs and is linked to the latest evidence-based parenting research from sources such as the Parenting Research Centre and Australian Research Alliance for Children and Youth (ARACY). Benalla Health is a key partner in delivering the program and more than 60 other agency and community members contribute time and resources.

Participation in PEEP is free, voluntary, and open to all. Parents/carers commit to attending at least one term, and are encouraged to attend until their children start kinder. When needed, families are given taxi vouchers and bus passes to assist them to attend. Local referral partners include Maternal & Child Health, DHHS Child Protection, Child First, Benalla Family Services, local preschools and schools.

During the year, we hosted visits from the Victorian Project Director for the Australian Early Development Census, Playgroup Victoria and representatives from a number of communities that had heard of Benalla PEEP's success and wanted to see the program in action.



224

FAMILIES WITH 307 CHILDREN ATTENDED AT LEAST ONE TERM OF PEEP

14

PEEP GROUPS BEING DELIVERED EACH WEEK AS AT JUNE 2019

392

VOLUNTEERS HOURS GIVEN BY 15 VOLUNTEERS

63

PROFESSIONAL HOURS GIVEN BY 9 COMMUNITY PARTNERS

84 per cent

OF CHILDREN AGED 0-4 YEARS LIVING IN BENALLA HAVE ATTENDED AT LEAST ONE TEN-WEEK PEEP PROGRAM IN THE FOUR YEARS FROM 2015-2019

"It's nice just sitting around with other parents & carers discussing everyday child related things, from food to sleep to tantrums and how to deal with things and learning from others what has worked, what hasn't etc."

"My children's confidence has grown and friendships made for the children and parents."

"I love the adult interaction and the reinforcement that I'm doing an okay job as a parent."



## PEEP Home Visits

PEEP home visits are offered to families experiencing geographical isolation or parent/child health issues

10

HOME VISITS MADE TO 10 FAMILIES WITH 20 CHILDREN

6

FAMILIES HAVE SINCE BEGUN ATTENDING REGULAR PEEP SESSIONS

**ABOVE:** PEEP children delight in the drama and suspense of The Very Sleepy Bear.

**LEFT:** Sharing stories together strengthens the parent-child bond and stimulates the development of oral language.

**OPPOSITE:** Excursions are a regular feature of PEEP, including to the much-loved Rocket Park.



## 1000 Books Before School

Tomorrow Today, in partnership with the Benalla Library, is encouraging families to read 1000 books to their children before they commence primary school. Sharing stories with babies and young children helps develop critical literacy skills that will prepare them for reading at school. Children are rewarded when they reach significant milestones. Every book that the child reads, or actively listens to, contributes to their goal of 1000 books. Forty-five Benalla children have reached the 1000 books milestone, three this year.

582

BENALLA CHILDREN HAVE SIGNED UP SINCE APRIL 2017, 70 OF THEM THIS YEAR

## Kinder Immersion

Kinder Immersion was offered to children starting school in 2019 who had been identified by their pre-school teachers as not being academically or socially 'ready'. The program's play-based curriculum is structured around themes, such as the Benalla Festival and summertime. Activities immerse children in opportunities to enhance their pre-literacy, pre-numeracy and oral language skills.

The children were assessed prior to and after the program was completed. A 'control group' of children who did not participate in the program was also assessed

8

CHILDREN AT 3 PRESCHOOLS COMPLETED THE 1.5-HOUR PER WEEK X 6-WEEK PROGRAM

**ABOVE:** Books and stories come to life as families celebrate their favourite characters during Book Week at PEEP.

## Great Start to School

Great Start to School is a four-week program that aims to improve parents' confidence in supporting their child's transition from kinder to primary school. Run in partnership with Benalla P-12 College, the program focuses on different aspects of school readiness including the importance of a morning routine, arriving at school on time, strategies to facilitate physical and emotional independence, and activities to help develop pre-literacy and pre-numeracy skills.

"The prep transition program is a credit to Tomorrow Today staff and our prep teachers, as the children have commenced the year following routines extremely well."

Benalla P-12 College Avon Campus Principal

40

CHILDREN AND THEIR PARENT/ CARERS PARTICIPATED

96 per cent

OF PARENTS AGREED THAT THE PROGRAM HELPED THEM WITH IDEAS FOR SETTING UP SCHOOL ROUTINES AT HOME

## Jump Start to Learning

This two-hour program provided parents with practical ideas for assisting their child's learning at home. Activities focus on the importance of reading at home and activities to develop oral and written language skills. The sessions were held at both Avon and Waller Campuses of Benalla P-12 College.

Eleven parents attended with all stating the sessions were valuable and helped them to think of ways that they could support their child's learning through everyday family activities.

## Little Free Library

Benalla's Little Free Library encourages children to take a book, read it, keep it or swap it for another. Tomorrow Today liaised with Benalla P-12 College's Hands On Learning program to construct book houses for the Little Free Library. The book houses have been placed at the Benalla Train Station, Benalla

YMCA, Benalla Carrier Street Clinic, Waminda Community House and the PEEP room. Books are donated by the Benalla Library, local op shops and community donors.

## Reading Buddies

Reading Buddies are trained volunteers who assist students in Years One and Two to improve their literacy levels. Reading Buddies help guide literacy development and reinforce the strategies taught in class.

As well as practicing their reading, students also enjoy being read to as they share the works of authors such as Mem Fox and Roald Dahl. Students develop a caring and trusting relationship with their Reading Buddies. This, in turn, helps to increase the children's confidence and self-esteem.

38

CHILDREN AT BENALLA P-12 WERE HELPED BY ...

27

READING BUDDY VOLUNTEERS WHO GAVE ...

889

VOLUNTEER HOURS

## Prep Immersion

'School readiness' refers to the knowledge, skills and behaviours that enable children to participate and succeed at school. Children cannot thrive if they haven't developed the skills to manage things like getting along with other children, following instructions, and communicating their needs.

Prep Immersion targets students considered by their school to be developmentally vulnerable in a number of areas on school entry and in need of focused support to 'switch on to learning'. The program was run in partnership with Benalla P-12 College at the Waller Campus. All children in the program made positive gains in their knowledge of letters, sounds and reading concepts. The classroom teachers noted a growth in the students' confidence and their literacy skills.



17

CHILDREN COMPLETED THE 3 HOUR PER WEEK X 8-WEEK PROGRAM

**TOP RIGHT:** A group Prep Immersion helps children 'switch on' to learning.

**BOTTOM RIGHT:** Each volunteer Reading Buddy is matched with a young student to support their literacy development. Students thank their Buddy at an annual morning tea attended by parents and teachers, who greatly appreciate the extra help provided.



## Kids as Catalysts

Kids as Catalyst recognises children as catalysts for positive community change. The program encourages students to think creatively to design and implement real-life philanthropic projects in conjunction with a community partner. Students have the opportunity to develop their project management, leadership and communication skills.

Kids as Catalysts ran in Benalla from 2016-2018 supporting a diverse range of local causes. Results of student and teacher surveys indicate the program had the following impacts on the students:

- 88% demonstrated improved: self-confidence, teamwork and perseverance, and empathy and social awareness
- 90% showed improved willingness to participate in class
- 83% increased their connections with kids outside school.

IN 2018 ...

82

YEAR 6 BENALLA P-12 STUDENTS PARTICIPATED

10

VOLUNTEERS GAVE 76 VOLUNTEER HOURS

16

COMMUNITY PARTNERS GAVE 160 HOURS

**ABOVE:** Students try out their sales pitch on Councillor Don Firth.



## Melbourne Recital Centre

Performing music in a group has benefits for participants' confidence, teamwork skills, focus, social connectedness, and their physical and mental health.

Under the guidance of Melbourne Recital Centre, Year 5 and 6 Hands On Learning students at Benalla P-12 College constructed wind, brass, string and percussion instruments using everyday materials such as PVC pipe, tins, ply board and fishing line. The students learnt how musical instruments work and how to play each of their creations. They worked together to compose a percussion piece on their 'monster board' and performed this to parents and

family members. The students also travelled to the Melbourne Recital Centre where they worked as a team to produce, compose and perform a musical percussion piece for a small audience.

The Melbourne Recital Centre also ran a community workshop for people with an interest in learning how to make musical instruments out of everyday items.



**ABOVE:** Students at Melbourne Recital Centre recording their musical composition.

**OPPOSITE:** An initial 'getting to know you' session for Connect9 mentors and mentees at the Benalla Aquatic Centre.

## Connect9

Connect9 is a unique ten week mentoring program, developed by Tomorrow Today. Two programs are run annually. Students in Year 9 level of schooling are matched with a community mentor, who is their 'buddy' throughout the program. Together, they participate in activities that connect the young people to new skills, sports and hobbies and new people and experiences, as well as giving them the opportunity to set life and career goals.

**92%** of mentees stated that completing Connect9 has helped them think about their future study and career options

**90%** of parents agree Connect9 has helped their child be more positive about their schooling



"Connect9 has helped me become open to trying new things, helping more and being part of the community."

"My daughter has received a massive boost to her confidence and self-belief because she completed Connect9."

"As a mentor, I have enjoyed seeing the mentees grow in self-confidence and self-esteem through all the experiences."



## Hands on Learning

Hands On Learning (HOL) is a program designed to prevent early school leaving. The program creates opportunities for young people to use and develop practical skills and experience success at school. Students work with two artisan teachers on 'hands on' projects that will benefit their school and the wider community including tree planting at Winton Wetlands, establishing a greenhouse to propagate vegetables and native seedlings, and the Cows Create Careers program.

Benalla students who participate in HOL noted a significant change in their ability to problem solve, manage their feelings, get along with others and their attitude toward their schooling.

18

STUDENTS IN YEARS 5/6 AT BENALLA P-12 COLLEGE ATTENDED FOR HALF A DAY/ WEEK

30

STUDENTS IN YEAR 7 TO 10 AT BENALLA P-12 COLLEGE ATTENDED HOL FOR ONE DAY/ WEEK

4

STUDENTS IN YEARS 7 TO 8 AT FCJ COLLEGE ATTENDED HOL FOR ONE DAY/WEEK UNTIL THE END OF 2018

**ABOVE:** A remarkable 10 year partnership between Benalla P-12 College and Tomorrow Today in delivering the Hands on Learning program receives recognition.

**OPPOSITE:** In a low socio-economic community like Benalla, assistance with uniforms and other back to school costs is essential to ensure all children can fully participate in education. Tomorrow Today presents St Joseph's PS with FRRR 'Back to School' vouchers.

## Individual Assistance

Learning opportunities for many of Benalla's young people are restricted by financial and/or social disadvantage. Thanks to the generosity of local donors, Tomorrow Today is able to support young people by providing financial assistance to enable them to participate in educational and community activities.

Families experiencing financial disadvantage have been assisted with funding for uniforms, spectacles, books, course fees, school camps, educational equipment and fees for special educational settings. This assistance ensures all Benalla children are able to fully participate in school activities.

28

CHILDREN WERE ASSISTED ON 43 OCCASIONS

8

REFERRAL SOURCES

## FRRR Back to School Vouchers

For the past fifteen years, Tomorrow Today has participated in the FRRR Back to School Program. Vouchers are allocated to schools to distribute to financially disadvantaged families. The vouchers are redeemable for items such as school uniforms, clothing, shoes, school bags and stationery items necessary to engage and participate at school.

In February 2019, FRRR awarded Tomorrow Today \$15,350 in vouchers. Tomorrow Today contributed \$750 from money raised locally and was granted an extra \$1,500 in vouchers under FRRR's matched funding scheme. A provider of a local school's uniforms was so impressed by the program that they generously donated an extra \$250 to assist Benalla families in purchasing school necessities.

"A massive thank you for the FRRR vouchers.... This will go a long way in ensuring all students are adequately prepared to come to school and break down any barriers such as uniform and school supplies."

Welfare Coordinator, Benalla P-12 College

\$17,100

OF VOUCHERS WERE DISTRIBUTED ITO 11 BENALLA AND DISTRICT SCHOOLS IN 2019



## Increasing Participation of Young People in Recreational Activities

Being involved in sport and other recreation activities helps young people improve their health and wellbeing and importantly keeps them engaged with school and learning.

Tomorrow Today partnered with Valley Sport and local sports and recreation groups to run two 'Come and Try' days. These days provide a great opportunity for children from Benalla and district to try out many activities at the one location, free of charge. The exciting sports and activities on offer included African drumming, airforce and army cadets, angling, archery, astronomy, Auskick, badminton, baseball, boxing, cricket, dancing, golf, Guides, gymnastics, hockey, instrumental music, little athletics, Kendo, netball, rugby, Scouts and Venturers, soccer, squash, swimming, tennis, windsailing, and yoga.

Financial assistance was offered to families with pension and health care cards to assist their children join local clubs.



## Digital Literacy

Tomorrow Today, in partnership with Seer Data and Analytics, worked with a group of thirty Benalla young people, aged 11 to 16 years, to build their work readiness skills through a new community-based project. The young people were guided through a series of workshops which encouraged them to identify local issues of importance to them, think creatively about how to solve these problems, incorporate evidence based research and feedback from their same-aged peers, and work with the community to co-design a useable digital solution. Close to 300 of Benalla's 11 to 16 year olds provided input into the product's design.

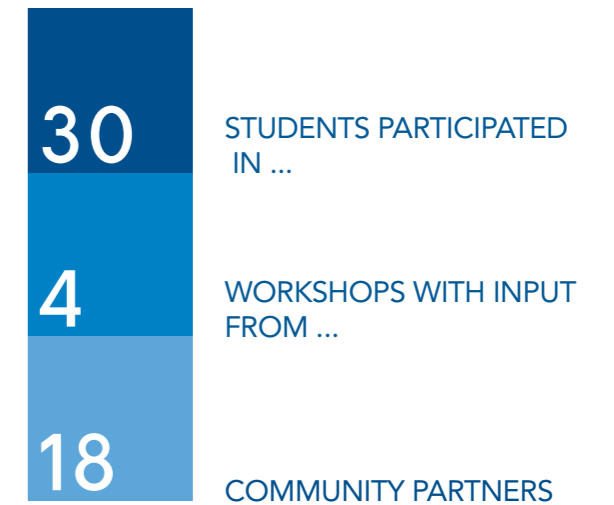
The result was [benallaworks.com.au](http://benallaworks.com.au) - a website they designed and developed to assist young people aged 15-25 years in finding paid work, work placement and volunteering opportunities in Benalla. The participants pitched the website to 200 local business people at the Hands On Trades Expo and were involved in promoting the website to business owners in the Benalla CBD.

"Being involved in the digital project is the best thing I've ever done. I have been able to pitch my ideas about problems that I've seen at school and in the community ... I couldn't have done this pitch without the workshops."

78% of participants agreed their teamwork and problem solving skills had improved.

94% of participants stated their knowledge in designing a digital product had increased

89% of participants agreed their communication skills had improved



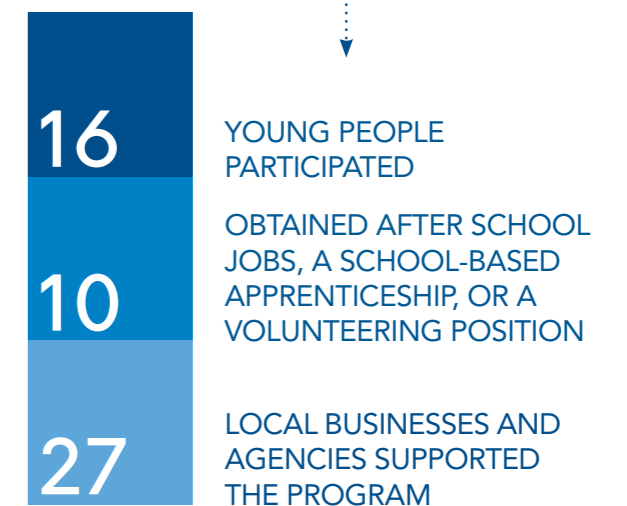
## Great Start to Work

After school jobs give teenagers an opportunity to gain invaluable life skills that will serve them in the future. The Great Start to Work program enables students to learn from local business people about employer expectations, work safety issues, employee roles, and rights and responsibilities in the workplace.

2 x 5-week training courses were held

**OPPOSITE:** ('Come and Try' archery, astronomy, drumming) Connection to friends and community helps young people to stay engaged with school and learning. For the first time, this year we ran two 'Come and Try' days to cover both summer and winter sports plus a host of other activities.

**OPPOSITE BOTTOM RIGHT:** Young people develop their planning and organisational skills as they work on potential digital solutions to local issues they have identified in the digital project.



## Hands on Trades Expo

Students gain significant benefit from real experiential workplace learning. The Hands On Trades Expo at Winton Motor Raceway enabled young people to try out various trade activities while finding out about trade career pathways on offer in the North East of Victoria. The expo engaged students in a diverse range of activities such as welding, spray painting, hairstyling and robotics. Tomorrow Today is an active member of the organising committee and contributes staff and financial resources.

**950** STUDENTS ATTENDED, **94** FROM BENALLA SCHOOLS

**39** EXHIBITORS OFFERED **50** DIFFERENT ACTIVITIES

**14** PARENTS/CARERS HAD THE OPPORTUNITY TO INTERACT WITH ...

**8** CAREERS SPECIALISTS

## Parents as Career Transition Support (PACTS)

Data shows that parents are the most influential people in their teen's career choices and aspirations, yet only 20% of parents feel sufficiently informed to give good advice. PACTS is designed to provide parents and carers with up-to-date information about educational pathways available for young people. Participants are guided through short 15 minute activities to assist their conversations with young people about careers, finding out about careers resources, apprenticeships and traineeships, and preparing young people to tackle the employment market.

## Year 10 Career Action Plan Workshops

Tomorrow Today provided funding for Year 10 students to engage in a motivational coaching session to identify their interests, strengths, skills and talents. These key interests are used to guide students' exploration of future careers and work experience choices. Tomorrow Today uses this information to select presenters and businesses to participate in the Year 10 Careers Day

**136** YEAR 10 STUDENTS FROM BENALLA P-12 COLLEGE AND FCJ COLLEGE ATTENDED A TWO-HOUR MOTIVATIONAL SESSION

**OPPOSITE:** Schneider Electric offers many career paths for local young people.

## Year 10 Careers Day

Students from local schools had the opportunity to learn about careers and career pathways at this annual event coordinated by Tomorrow Today.

Workplace visits to Rose City Veterinary Hospital, Benalla Health, Schneider Electric and Primal Health Club offered a mix of observation and hands-on activities.

Workshops on digital design, science and engineering were presented by the Academy of Interactive Entertainment (AIE), Charles Sturt University and Latrobe University respectively.

Students learned about volunteering opportunities available through Benalla Rural City Council and heard from John Holland's HR manager about future employment opportunities at LS Precast.

During the popular 'speedy talks', students moved between twelve tables and had the opportunity to interact with a range of local professionals. The day concluded with a series of workshops discussing careers in the police force, emergency services, traineeships and apprenticeships, as well as university life.

**108** STUDENTS ATTENDED FROM **4** SECONDARY SCHOOLS

**30** AGENCIES AND EMPLOYERS PROVIDED INFORMATION ON MORE THAN ...

**80** CAREER PATHS

"It was a good opportunity to share our site with Benalla students who may one day work with us."

Local business







## University Bus Trips

Accessing a university pathway can be a struggle for rural students. Distance, accommodation, lack of reliable transport and reduced economic circumstances impact on students' choices.

Tomorrow Today, with the assistance of the Sir Edward 'Weary' Dunlop Memorial Committee, coordinated and funded tours of Melbourne universities. Students were able to see a university in action and visit lecture theatres, recreation and accommodation facilities

43% of attendees had not visited a university prior to the tour.

90% of those who weren't considering university are now re-thinking that decision

"Speaking with students gave a real insight into life on campus, not just what the pamphlets say."

"I got to see some of the accommodation and pricing as well as some other options if I don't get the right ATAR."

Students who attended the uni visits

46

STUDENTS IN YEARS 11 AND 12 FROM FCJ COLLEGE AND BENALLA P-12 COLLEGE ATTENDED ...

4

UNIVERSITIES (LA TROBE, RMIT, MONASH, DEAKIN)

## Increasing work placement opportunities

Tomorrow Today facilitates the Benalla Future Work Steering Committee. Fourteen local partners, including NE Tracks LLEN, Benalla Rural City Council, local secondary schools, local employment providers, Benalla Business Network and Benalla Health, meet bimonthly to plan and implement actions related to career development for young people, expanding the number engaged in school-based apprenticeships and increasing our community's aspirations for them to succeed.

Sixty local businesses were interviewed regarding barriers to employing a school-based apprentice. While time and adequate staffing to mentor a young person were highlighted as issues, 95% of businesses would consider employing and training a young person. These businesses were linked with a local apprenticeship provider.

Tomorrow Today proudly employs a school based apprentice. The Year 11 student who works with us is completing a Certificate III in Early Childhood Education and assists the PEEP program every Wednesday.

**ABOVE:** Local business owner Graham Parker offered Matthew a School-Based Apprenticeship after meeting him at a Tomorrow Today Great Start to Work session.

## Year 12 Scholarships

Tomorrow Today awarded \$1,000 scholarships to four Year 12 students, two from Benalla P-12 College and two from FCJ College, to assist them with the costs involved in transitioning to further study. The successful students have been accepted into the following courses:

- Diploma of General Studies at Charles Sturt University, Wagga Wagga campus
- Diploma of Nursing at GOTAFE Wangaratta.

Two students are taking a gap year.

\$1000  
scholarships

WERE AWARDED TO 4 YEAR 12 STUDENTS

## Student Placements

Tomorrow Today hosted three student placements during the year. All students were studying Community Services through private institutions and online courses.

# Directors



## Adrian Aldous – Retired June 2019

Adrian established a chartered accounting firm in Benalla in 1978, now Aldous and Hill. Since that time he has been deeply involved in community life. Adrian was an office bearer on the Benalla & District Memorial Hospital Board for 10 of his 15 years. He has also been Treasurer of many organisations and as a keen tennis player was a long standing member of the Benalla Lawn Tennis Club Committee. Adrian retired from the Board in June after nearly 14 years' service, including 12 as Treasurer.



## Georgina Burston

Georgina is a long-term Benalla and district resident. As her children were growing her career focused on high level executive support and board governance roles in the private and public sector. She has a long history of community volunteering and fundraising, particularly for the Benalla Art Gallery and more recently for other not-for-profit organisations. After many years of study, she is currently expanding her business in the area of clinical yoga therapy. Georgina joined the Board in September 2018.



## Liz Chapman OAM

### Convenor, Education Benalla Program

Liz's formal qualifications in agriculture and rural development back up more than 20 years of working at a local, regional and national level with private businesses and industry groups, government agencies, regional authorities and community organisations. Liz was the founding director of Tomorrow Today in 2000 and inaugural Chair. Since 2007 she has led the development and implementation of the Education Benalla Program. In 2017 Liz was awarded a Medal of the Order of Australia for services to education and to the community.



## Patrick Duffy

Patrick grew up on a grazing property at Thoona, his family having farmed in the Benalla district for many generations. After starting his career at Ernst & Young, Patrick spent many years as a senior mining sector executive in Asia and the Pacific. He has experience working with international community development foundations, with a particular focus on education. Patrick is now Melbourne-based, regularly visiting Benalla.



## Sally Gamble

### Chair

Sally is a founding director of Tomorrow Today, serving as Chair since 2009, and gives significant time in addition to her board role. Over the last twenty years she has contributed to the community through numerous organisations. Sally is currently a member of the Regent Honeyeater Project committee and has recently joined the Ovens Murray Regional Partnership. She is a Director and Company Secretary of Australian Community Philanthropy and is a member of the Australian Institute of Company Directors.



## Melinda Lawley

Melinda has worked with young people throughout her career, initially as a secondary teacher before moving into community and health fields. This trajectory underpins her commitment to working across sectors to enhance outcomes for young people. Melinda has lived in Benalla for 20 years and worked alongside Tomorrow Today for much of this time. She is currently the CEO of a youth welfare organisation in Shepparton. Melinda joined the Board in September 2018.



## Louise Pearce

### Treasurer

Louise is an executive manager at TAFE, continuing a career focused on education. Louise and her husband raised their five children in Benalla where she has been an active community member over many years, holding positions of office in sporting clubs, Guides and Scouts. Louise is a member of the Committee of Management of the local NE Tracks LLEN (Local Learning and Employment Network).



## Nicholas Taylor

### Deputy Chair, Company Secretary

Nick is a commercial builder who established his business, Landmark Construction Group Pty Ltd, in Benalla in 2001. His long history of community involvement includes serving on St Joseph's Primary School Council, the Sandhurst Diocese Education Board and the Benalla Racing Club Committee. Nick has been a volunteer with the Samaria CFA for more than 20 years, for a large part of this time as Captain. Nick is a member of the Australian Institute of Company Directors.



## Florent Thivillier

Florent is an industrial engineer who came to Benalla in 2001 from his native France. Originally moving here to work at Schneider Electric, he and his wife fell in love with Benalla and chose to raise their family here. Florent is actively involved in the community, including as a participant and coach in numerous local sporting clubs. He is currently Production Manager at a major regional food manufacturer. Florent joined the Board in September 2018.

# Organisational Sustainability

Our strategic focus for the period 2017-2022 is to secure the sustainability of the organisation for ongoing community benefit, positioned to respond to long term community challenges and opportunities.

## Some of the initiatives undertaken to ensure sustainability in 2018-19

### Increasing Board Strength and Diversity

A strong and diverse board committed to good governance and the development of Tomorrow Today is vital for the organisation to flourish. During the year we were extremely pleased to recruit three high calibre new directors, Georgina Burston, Melinda Lawley and Florent Thivillier, who bring a breadth of valuable skills and experience.

We are also trialling a Board Associate Program that involves a one-year commitment to the Foundation. This has the complementary aims of increasing the range of skills and viewpoints available to the Board, strengthening the Foundation's connection to the community, and building the capacity of local people to serve on not-for-profit boards. We are very pleased that Punarji Gunaratne and Tim Murphy will complete the program in December 2019.

### Building our Bequest Program

Including a gift to Tomorrow Today in your Will is a powerful way to support Benalla and district's future. It is with deep appreciation that we acknowledge the Foundation's first bequest, left by respected local identity Peter Tallis. Peter and his wife Mary moved to Dookie 60 years ago where they established their much loved farm. Peter was a quiet achiever who made a remarkable contribution to the Benalla and District community over the course of his life. He was a long-term and generous supporter of many local organisations. We are proud to have been one of the causes that Peter cared about. His gift has helped us to increase our equity in our Cecily Court property, purchased in September 2017.

### Establishment of New 'Friends' group

In February 2019 the 'Friends of Tomorrow Today' was established to support and promote the work of the Foundation. The main priority for this group of community-minded local citizens is to organise at least one major fundraising activity each year. Planning is well underway for the first event, an Open Garden to be conducted on 9/10 November at Marangy, the home of Board Chair Sally Gamble and her husband Gerard Brownstein. In addition, a major raffle is being conducted to be drawn the day after the Open Garden event. Both activities will raise funds that can be used by the Foundation for their area of greatest need.

People interested in joining the 'Friends' are invited to contact the Tomorrow Today office during business hours.



**LEFT:** As well as volunteering for the Board Associate Program, Tim Murphy gave his time as a Connect9 mentor this year.

**MIDDLE:** Peter Tallis pictured at 'Boorinda', Dookie

**RIGHT:** Friends of Tomorrow Today members plan for the Open Garden at Marangy

# Tomorrow Today Financials

The following pages include extracts from the audited financial reports of our three charitable entities.

Tomorrow Today submits full reports to the Australian Charities and Not-for-profits Commission (ACNC) by the reporting deadline each year.

Copies of our audited financial reports for the year ended 30 June 2019 are available on request or from.

### Auditors

Stubbs Wallace  
160 Welsford St  
Shepparton Vic 3630

## Tomorrow Today A Foundation for Rural Community Development (ABN 19 096 214 907)

The objective of the company known as Tomorrow Today Foundation is to enable the people of Benalla and district to create a stronger, more resilient and prosperous rural community.

The company is trustee of the Tomorrow Today Public Fund (see page 37) which provides tax deductibility for all gifts over \$2. The combination of the Public Fund and the Open Fund (where supporters do not require a tax deduction) constitute Benalla's Community Fund. During the year, funds were raised to continue building the Community Fund. Grants from Community Fund income were made to benefit the district.

On 28 September 2017 the company purchased Cecily Court, 66-68 Nunn Street, Benalla, where it had been leasing offices since 2010. Owning the Cecily Court commercial property provides a secure base for our community activities and a long term investment income stream from leased offices. It is a significant step towards the goal of securing financial independence for Benalla's community foundation. Philanthropic and local financial support enabled the purchase. The William Buckland Foundation provided a \$600,000 fixed rate ten-year loan towards the purchase which is secured by a registered first mortgage. Two principal repayments of \$200,000 have been made, on 30 September 2018 and 2019 respectively as per the loan agreement. The Property Equity Reserve in the Statement of Changes in Funds shows the equity the company holds in the property.

### Statement of Profit or Loss and Other Comprehensive Income

For the year ended 30 June 2019

	Note	2019	2018
		\$	\$
Revenue and other income	2	340,752	376,323
Community grants distributed		(9,900)	(18,860)
Interest paid – Investment property		(13,500)	(13,500)
Investment property expenses		(13,805)	(13,757)
Administration expenses		(8,677)	(9,944)
Donations non cash		–	(182)
FRRR fees		(1,179)	(1,754)
Fundraising expenses		–	(1,159)
Management fees		(16,461)	(11,300)
Professional fees		(10,560)	(9,307)
Depreciation and amortisation expenses	3	(1,706)	(832)
Investment fees		(1,561)	(3,190)
<b>Current year surplus</b>		<b>263,403</b>	<b>292,538</b>
<b>Other comprehensive income:</b>			
Items to be reclassified subsequent to profit or loss when specific conditions are met:			
Net changes in fair value of available-for-sale financial assets	6	2,534	(9,175)
<b>Other comprehensive income (loss) for the year</b>		<b>2,534</b>	<b>(9,175)</b>
<b>Total Comprehensive Income for the Year</b>		<b>265,937</b>	<b>283,363</b>

The accompanying notes form part of these financial statements.

### Statement of Cash Flows

For the year ended 30 June 2019

Note	2019	2018
	\$	\$
<b>CASH FLOWS FROM OPERATING ACTIVITIES</b>		
Receipts from operations	68,779	65,203
Grants received	157,140	180,175
Rent received	92,947	71,702
Interest received	4,659	4,881
Dividends received	5,382	6,802
Investment distributions	19,568	15,846
Payments to suppliers	(64,711)	(64,915)
Interest paid	(13,500)	(13,500)
<b>Net cash from operating activities</b>	<b>270,264</b>	<b>266,194</b>
<b>CASH FLOWS FROM INVESTING ACTIVITIES</b>		
Proceeds from sale of investments	197,670	110,000
Purchase of investments	(171,176)	(130,075)
Purchase of plant and equipment	(350)	(10,512)
Purchase of investment property	-	(1,028,051)
<b>Net cash from (used in) investing activities</b>	<b>26,144</b>	<b>(1,058,638)</b>
<b>FINANCING ACTIVITIES</b>		
Repayment of borrowings	(200,000)	-
Proceeds from borrowings	-	600,000
<b>Net cash (used in) from financing activities</b>	<b>(200,000)</b>	<b>600,000</b>
Net increase/(decrease) in cash	96,408	(192,444)
Cash and cash equivalents at 1 July	340,186	532,630
<b>Cash and cash equivalents at 30 June</b>	<b>436,594</b>	<b>340,186</b>

The accompanying notes form part of these financial statements.

### Statement of Financial Position

As at 30 June 2019

Note	2019	2018
	\$	\$
<b>CURRENT ASSETS</b>		
Cash and cash equivalents	4 436,594	340,186
Accounts receivable and other debtors	5 22,553	40,390
<b>Total Current Assets</b>	<b>459,147</b>	<b>380,576</b>
<b>NON-CURRENT ASSETS</b>		
Available-for-sale financial investments	6 333,157	348,721
Property, plant and equipment	7 19,144	20,500
Investment property	8 1,028,051	1,028,051
<b>Total Non-Current Assets</b>	<b>1,380,352</b>	<b>1,397,272</b>
<b>Total Assets</b>	<b>1,839,499</b>	<b>1,777,848</b>
<b>CURRENT LIABILITIES</b>		
Accounts payable and other payables	9 3,951	8,237
Borrowings	10 200,000	200,000
<b>Total Current Liabilities</b>	<b>203,951</b>	<b>208,237</b>
<b>NON-CURRENT LIABILITIES</b>		
Borrowings	10 200,000	400,000
<b>Total Non-Current Liabilities</b>	<b>200,000</b>	<b>400,000</b>
<b>Total Liabilities</b>	<b>403,951</b>	<b>608,237</b>
<b>Net Assets</b>	<b>1,435,548</b>	<b>1,169,611</b>
<b>FUNDS</b>		
Reserves	1,301,015	1,079,928
Retained surplus	134,533	89,683
<b>Total Funds</b>	<b>11 1,435,548</b>	<b>1,169,611</b>

The accompanying notes form part of these financial statements.

### Statement of Changes in Funds

For the year ended 30 June 2019

Note	Open Fund Capital Reserve	Open Fund Income Reserve	Special Purpose Reserve	Property Equity Reserve	Retained Surplus	Total Funds
	\$	\$	\$	\$	\$	\$
<b>Balance at 30 June 2017</b>	<b>542,098</b>	<b>39,331</b>	<b>249,845</b>	<b>-</b>	<b>54,974</b>	<b>886,248</b>
Transfers to reserves	12,066	42,726	240,387	275,000	(570,179)	-
Transfers from reserves	-	(37,039)	(284,486)	-	321,525	-
Net surplus	-	-	-	-	283,363	283,363
<b>Balance at 30 June 2018</b>	<b>554,164</b>	<b>45,018</b>	<b>205,746</b>	<b>275,000</b>	<b>89,683</b>	<b>1,169,611</b>
Transfers to reserves	5,000	38,610	193,598	200,000	(437,208)	-
Transfers from reserves	-	(14,943)	(201,178)	-	216,121	-
Net surplus	-	-	-	-	265,937	265,937
<b>Balance at 30 June 2019</b>	<b>559,164</b>	<b>68,685</b>	<b>198,166</b>	<b>475,000</b>	<b>134,533</b>	<b>1,435,548</b>

The accompanying notes form part of these financial statements.

## Tomorrow Today A Foundation for Rural Community Development Public Fund (ABN 98 553 570 389)

### Income Statement

For the year ended 30 June 2019

	2019	2018
	\$	\$
<b>INCOME</b>		
Donations	82,640	102,520
Investment income	25,366	27,635
Profit on disposal of investments	5,334	5,856
<b>Total income</b>	<b>113,340</b>	<b>136,011</b>
<b>EXPENDITURE</b>		
Community grants distributed	-	2,500
Grants to Tomorrow Today Education Foundation	4,650	8,390
Grants to FRRR for Benalla & District (Note2)	47,140	62,175
Administration fees	6,778	6,270
Bank fees	150	149
Loss on disposal of investments	-	390
Investment fees	1,601	2,041
<b>Total expenses</b>	<b>60,319</b>	<b>81,915</b>
<b>Surplus</b>	<b>53,021</b>	<b>54,096</b>
<b>OTHER COMPREHENSIVE INCOME</b>		
<b>Items that won't be reclassified to profit or loss:</b>		
Net changes in fair value of available-for-sale financial assets	6,558	(8,176)
<b>Other Comprehensive Income for the year</b>	<b>6,558</b>	<b>(8,176)</b>
<b>Total Comprehensive Income for the year</b>	<b>59,579</b>	<b>45,920</b>

The accompanying notes form part of these financial statements.

### Statement of Financial Position

As at 30 June 2019

	2019	2018
	\$	\$
<b>CURRENT ASSETS</b>		
Cash and cash equivalents	270,680	266,744
Accounts receivable and other debtors	861	530
Accrued distributions	11,744	12,483
Accrued interest	739	913
<b>Total Current Assets</b>	<b>284,024</b>	<b>280,670</b>
<b>NON-CURRENT ASSETS</b>		
Available-for-sale financial investments	361,211	304,986
<b>Total Non-Current Assets</b>	<b>361,211</b>	<b>304,986</b>
<b>Total Assets</b>	<b>645,235</b>	<b>585,656</b>
<b>LIABILITIES</b>		
<b>Total Liabilities</b>	<b>-</b>	<b>-</b>
<b>Net Assets</b>	<b>645,235</b>	<b>585,656</b>
<b>FUNDS</b>		
Settled Sum	100	100
Corpus (Note 3)	552,545	540,595
Accumulated funds (Note 3)	92,590	44,961
<b>Total Funds</b>	<b>645,235</b>	<b>585,656</b>

The accompanying notes form part of these financial statements.

**BELOW:** PEEP outdoor play sessions help develop children's physical and social skills.



## Tomorrow Today Education Foundation (ABN 90 610 420 123)

Tomorrow Today Education Foundation is a Public Benevolent Institution with the objective of reducing the level of social disadvantage in Benalla and district.

During the year, the company worked with families, schools and the wider community to deliver the

Education Benalla Program. The Program responds to the multiple effects of high levels of social disadvantage to improve the educational outcomes of Benalla's young people.

### Statement of Profit or Loss and Other Comprehensive Income

For the period ended 30 June 2019

	Note	2019	2018
		\$	\$
Revenue and other income	2	879,967	699,013
Employee benefits expense		(521,741)	(509,685)
Program expenses		(244,145)	(157,821)
Community grants distributed		(44,265)	(57,533)
Office accommodation costs		(8,215)	(10,644)
Administration expenses		(7,210)	(6,884)
Professional fees		(6,710)	(8,363)
Depreciation and amortisation expenses	3	(3,332)	(3,254)
Loss on disposal of leasehold improvements		-	(16,799)
<b>Current year surplus (deficit)</b>		<b>44,349</b>	<b>(71,970)</b>
<b>Other comprehensive income:</b>			
Items to be reclassified subsequent to profit or loss when specific conditions are met:		-	-
<b>Other comprehensive income</b>		<b>-</b>	<b>-</b>
<b>Total Comprehensive Income (Deficit) for the Year</b>		<b>44,349</b>	<b>(71,970)</b>

The accompanying notes form part of these financial statements.

### Statement of Cash Flows

For the year ended 30 June 2019

	2019	2018
	\$	\$
<b>CASH FLOWS FROM OPERATING ACTIVITIES</b>		
Grants received	820,843	645,490
Donations received	23,547	37,402
Interest received	4,680	4,821
Management fees received	16,461	11,300
Other income	13,420	-
Payments to suppliers and employees	(822,023)	(714,149)
<b>Net cash from (used in) operating activities</b>	<b>56,928</b>	<b>(15,136)</b>
<b>CASH FLOWS FROM INVESTING ACTIVITIES</b>		
Payments for property, plant and equipment	(2,356)	-
<b>Net cash (used in) investing activities</b>	<b>(2,356)</b>	<b>-</b>
Net increase (decrease) in cash	54,572	(15,136)
<b>Cash and cash equivalents at the beginning of the financial year</b>	<b>388,438</b>	<b>403,574</b>
<b>Cash and cash equivalents at the end of the financial year (Note 4)</b>	<b>443,010</b>	<b>388,438</b>

The accompanying notes form part of these financial statements.

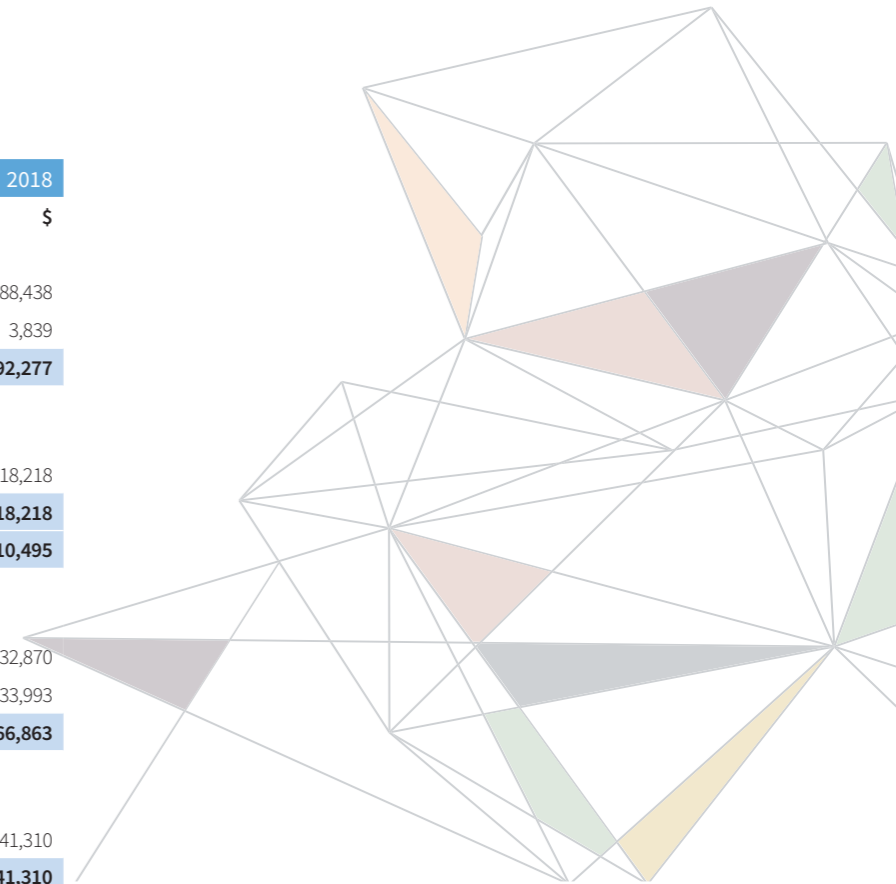
## Tomorrow Today Education Foundation (ABN 90 610 420 123)

### Statement of Financial Position

As at 30 June 2019

	Note	2019	2018
		\$	\$
<b>CURRENT ASSETS</b>			
Cash and cash equivalents	4	443,010	388,438
Accounts receivable and other debtors	5	6,423	3,839
<b>Total Current Assets</b>		<b>449,433</b>	<b>392,277</b>
<b>NON-CURRENT ASSETS</b>			
Property, plant and equipment	6	17,242	18,218
<b>Total Non-Current Assets</b>		<b>17,242</b>	<b>18,218</b>
<b>Total Assets</b>		<b>466,675</b>	<b>410,495</b>
<b>CURRENT LIABILITIES</b>			
Accounts payable and other payables	7	34,759	32,870
Employee provisions	8	38,581	33,993
<b>Total Current Liabilities</b>		<b>73,340</b>	<b>66,863</b>
<b>NON-CURRENT LIABILITIES</b>			
Employee provisions	8	46,664	41,310
<b>Total Non-Current Liabilities</b>		<b>46,664</b>	<b>41,310</b>
<b>Total Liabilities</b>		<b>120,004</b>	<b>108,173</b>
<b>Net Assets</b>		<b>346,671</b>	<b>302,322</b>
<b>FUNDS</b>			
Reserves		295,649	279,502
Retained surplus		51,022	22,820
<b>Total Funds</b>	9	<b>346,671</b>	<b>302,322</b>

The accompanying notes form part of these financial statements.



**OPPOSITE:** Young people are ready for part-time employment after completing the five week Great Start to Work program.

### Statement of Changes in Funds

For the period ended 30 June 2019

	Note	Education Benalla Program Reserve	Special Purpose Reserve	Retained Surpluses	Total Funds
		\$	\$	\$	\$
<b>Balance at 30 June 2017</b>		<b>351,396</b>	<b>14,632</b>	<b>8,264</b>	<b>374,292</b>
Transfer to reserves		637,100	45,792	(682,892)	-
Transfers from reserves		(742,598)	(26,820)	769,418	-
Net (deficit)		-	-	(71,970)	(71,970)
<b>Balance at 30 June 2018</b>	9	<b>245,898</b>	<b>33,604</b>	<b>22,820</b>	<b>302,322</b>
Transfer to reserves		800,350	47,022	(847,372)	-
Transfers from reserves		(788,487)	(42,738)	831,225	-
Net surplus		-	-	44,349	44,349
<b>Balance at 30 June 2019</b>	9	<b>257,761</b>	<b>37,888</b>	<b>51,022</b>	<b>346,671</b>

The accompanying notes form part of these financial statements.





## Our Supporters

Our board and staff wish to thank the many individuals, families, community groups, businesses and philanthropic funders who have given to Tomorrow Today to support our work. We also appreciate the significant contribution made by local volunteers and partnering organisations.

### We are proud to acknowledge the following gifts received during the 2018/19 financial year.

#### Grants

- The Ian Potter Foundation
- The William Buckland Foundation
- The Ledger Charitable Trust managed by Perpetual
- The R E Ross Trust
- Dept Social Services – Strong and Resilient Communities
- Aesop Foundation
- Jack Brockhoff Foundation
- Drakensberg Trust
- Foundation for Rural & Regional Renewal
- June Canavan Foundation
- The Kimberley Foundation
- Newsboys Foundation

**ABOVE:** Rotary are strong supporters of Tomorrow Today's work.

## Gifts received during the 2018/19 financial year (cont.)

Donations, sponsorships and fundraisers

\$10,000  
and above

### GOLD SUPPORTERS

- |                     |                |
|---------------------|----------------|
| Aldous, A & M       | Merrigan Trust |
| Anonymous (1)       | Parris, B & J  |
| Dobson, B & K       | Pruden, M & J  |
| Estate of JP Tallis | Smith, B & D   |

\$1,000 to  
\$9,999

### SILVER SUPPORTERS

- |                               |  |
|-------------------------------|--|
| Anonymous (3)                 | RBR Refrigeration Services                         |
| Arnott, N                     | Rees, P & D  |
| Benalla Baptist Church        | Rotary Club of Benalla                             |
| Benalla Church Street Surgery | Sir Edward Weary Dunlop Benalla Memorial Committee |
| Brownstein, G & Gamble, S     | Thivillier, F                                      |
| Burston, G                    | Thompson, P  |
| Gamble, K                     | Vial, B & Stephenson, K                            |
| Gibson AO, D                  | Widdup, R & J                                      |
| James, S                      |  |
| Landmark Construction Group   |  |
| Lima South Quarry             |  |
| North East Life               |  |
| Piper, S                      |  |

### BRONZE SUPPORTERS

- |                            |                 |                                      |
|----------------------------|-----------------|--------------------------------------|
| Admans, S                  | Gamble, J       | Monger, A & J                        |
| Alexander AO, B            | Gourley, J      | Nicholas, V                          |
| Anonymous (5)              | Grubb, N        | Noonan, E                            |
| Ashton, B & J              | Hill, C         | Ogilbee, H                           |
| Bath, G & L                | Hillman, J      | Rubira, J                            |
| Benalla Rural City Council | Hodge, M & L    | Sadler, F & R                        |
| Bennison, J                | Howell, E       | Smith, N & L                         |
| Chapman OAM, L             | Lowen, L        | Soroptimist International of Benalla |
| de Meyrick, R              | Mancave Sheds   | Tanner, P & L                        |
| Dore, M                    | Martin, A & D   | Tattersson, C & B                    |
| Edwards, J                 | Martin, M       |                                      |
| Faithfull, M               | McIntosh, G     |                                      |
| Falkiner, D                | Mitchell, K & P |                                      |

\$50 to  
\$999



Printed on recycled paper



PO Box 281, Benalla 3671  
Shop 10, Cecily Court  
66 Nunn St, Benalla 3672

(03) 5762 1211  
[admin@tomorrowtoday.com.au](mailto:admin@tomorrowtoday.com.au)  
[www.tomorrowtoday.com.au](http://www.tomorrowtoday.com.au)

